

202-320 hp  
7 liter

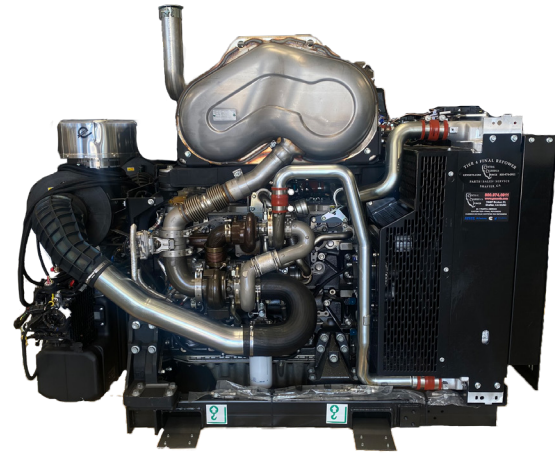
# 1206J-E70TTA

EU Stage V, U.S. EPA & CARB Tier 4 Final

Industrial  
Agricultural  
Mobile, Stationary or Portable

## Specifications

Type	Diesel 4 Stroke
Configuration	6 Vertical In-Line
Air Handling	Series Turbocharged Aftercooled
Bore X Stroke	105 mm X 135 mm
Displacement	7 L
Compression Ratio	16.5:1
Valves Per Cylinder	4
Rotation	Anti-Clockwise
Fuel System	Electronic High Pressure Common Rail
Aftertreatment System	DOC, DPF, SCR

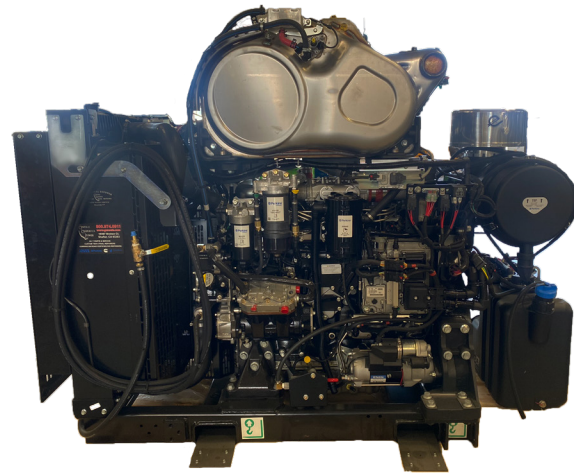


## Engine Configuration Options

Emissions Configuration	Tier 4 Final / Stage 5
Flywheel Housing	SAE 1, SAE2, SAE3
Flywheel	SAE 1, SAE2, SAE3
Air Compressor	Yes
Voltage	12 V or 24 V
Alternator	12 V or 24 V
Starter	12 V or 24 V

## Dimensions

Base Engine L X W X H	69.6 in. X 36 in. X 57.5 in.
Weight (Dry)	2,396 lbs.



Powering Businesses

Since 1982

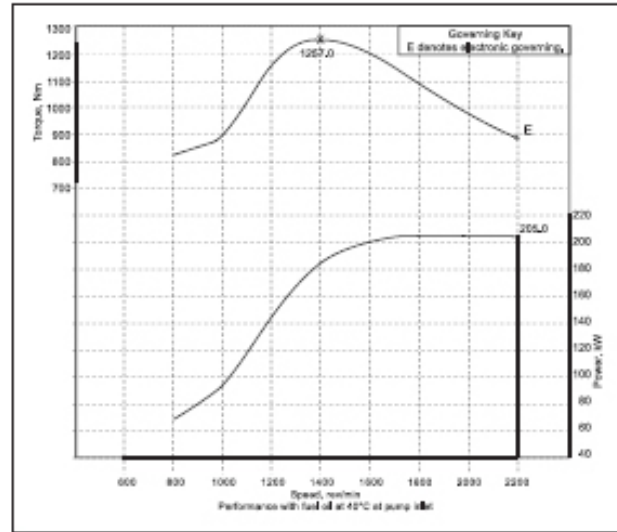
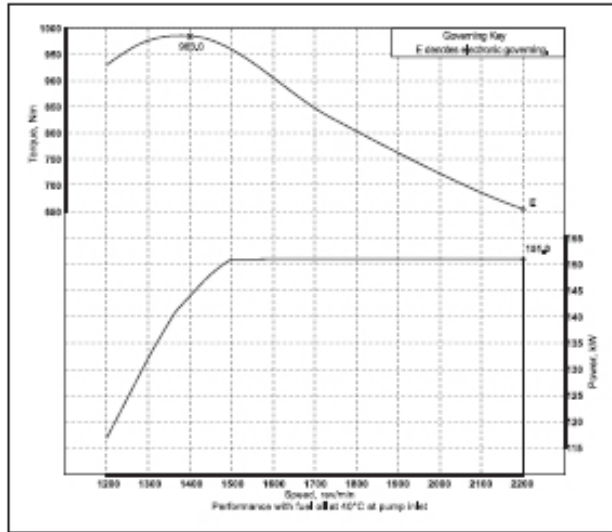


**202-320 hp  
7 liter**

# 1206J-E70TTA

EU Stage V, U.S. EPA & CARB Tier 4 Final

**Industrial  
Agricultural  
Mobile, Stationary or Portable**



### Engine Ratings

Speed RPM	Power hp	Speed RPM	Torque NM	Torque lb./ft.	Rating Type
2200	202	1400	922	680	B
2200	225	1400	1028	758	B
2200	249	1400	1142	842	C
2200	275	1400	1257	927	C
2200	301	1400	1247	939	C
1800	320	1400	1268	946	D



Powering Businesses

Since 1982

